

Why do Chinese patients have better functional outcomes after intracerebral haemorrhage? INTERACT2 results

Xia Wang

The George Institute for Global Health
xwang@georgeinstitute.org.au

For the INTERACT2 Investigators in 144 hospitals in 21 countries

Baseline – Differences in demographic / medical history characteristics

Variable	Non-China (N=909)	China (N=1920)	P value
Age, mean(SD), yr	68(13)	61(13)	0.02
Male	64%	62%	0.31
BP (mmHg)	180/96	174/104	<0.01
History of hypertension	71%	73%	0.11
Current use of antihypertensive	56%	40%	<0.01
History of diabetes	17%	8%	<0.01
Prior acute coronary event	6%	2%	<0.01
Use of warfarin	8%	0.4%	<0.01
Use of aspirin or other	22%	4%	<0.01

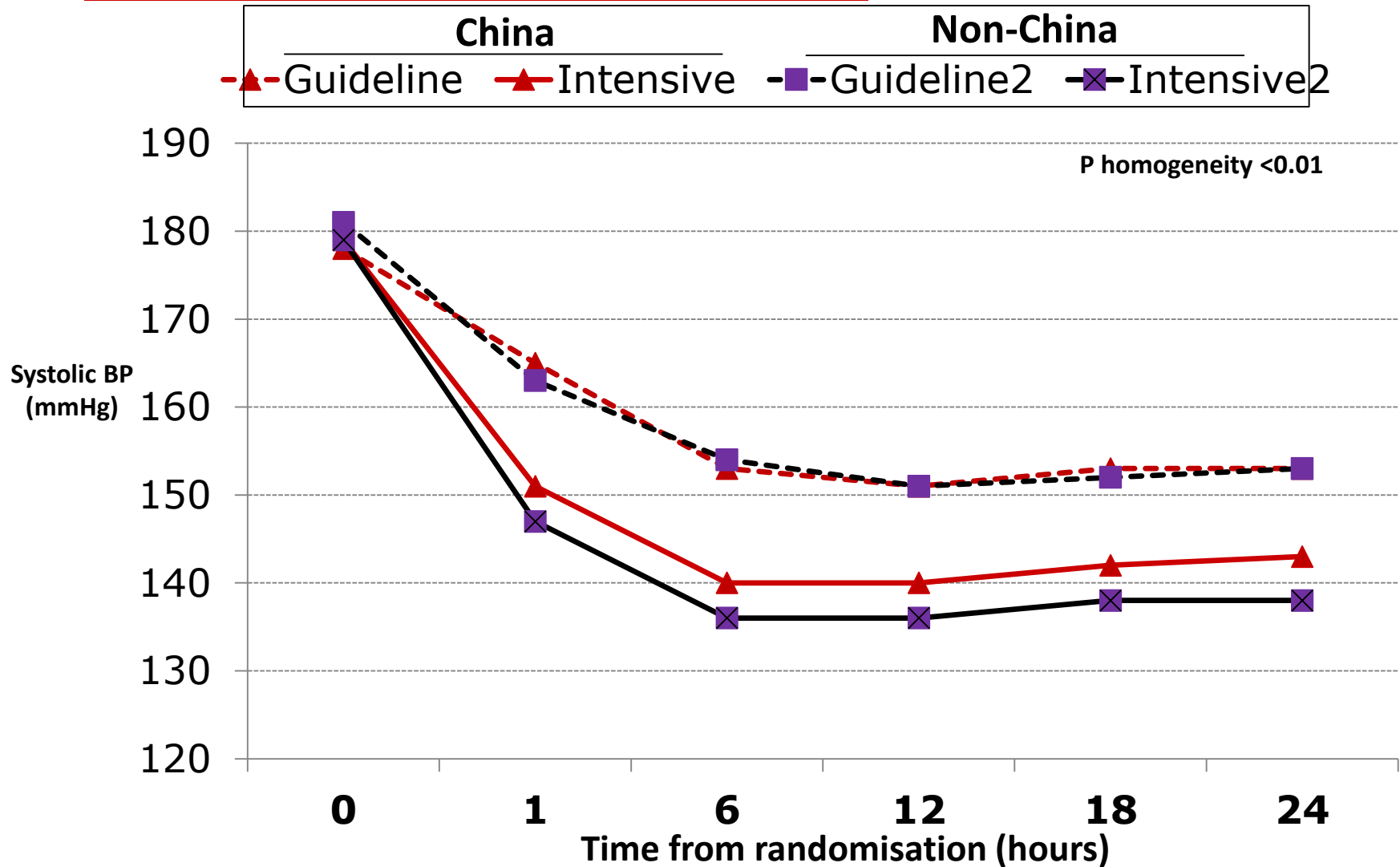
Baseline – Clinical / hematoma characteristics

Variable	Non-China (N=909)	China (N=1920)	P
NIHSS median(iqr) score	12(7-17)	10(5-14)	<0.01
ICH volume median (iqr) mL	11(6-23)	11(6-18)	0.40
Deep location	81%	85%	0.01
Intraventricular extension	31%	27%	0.02

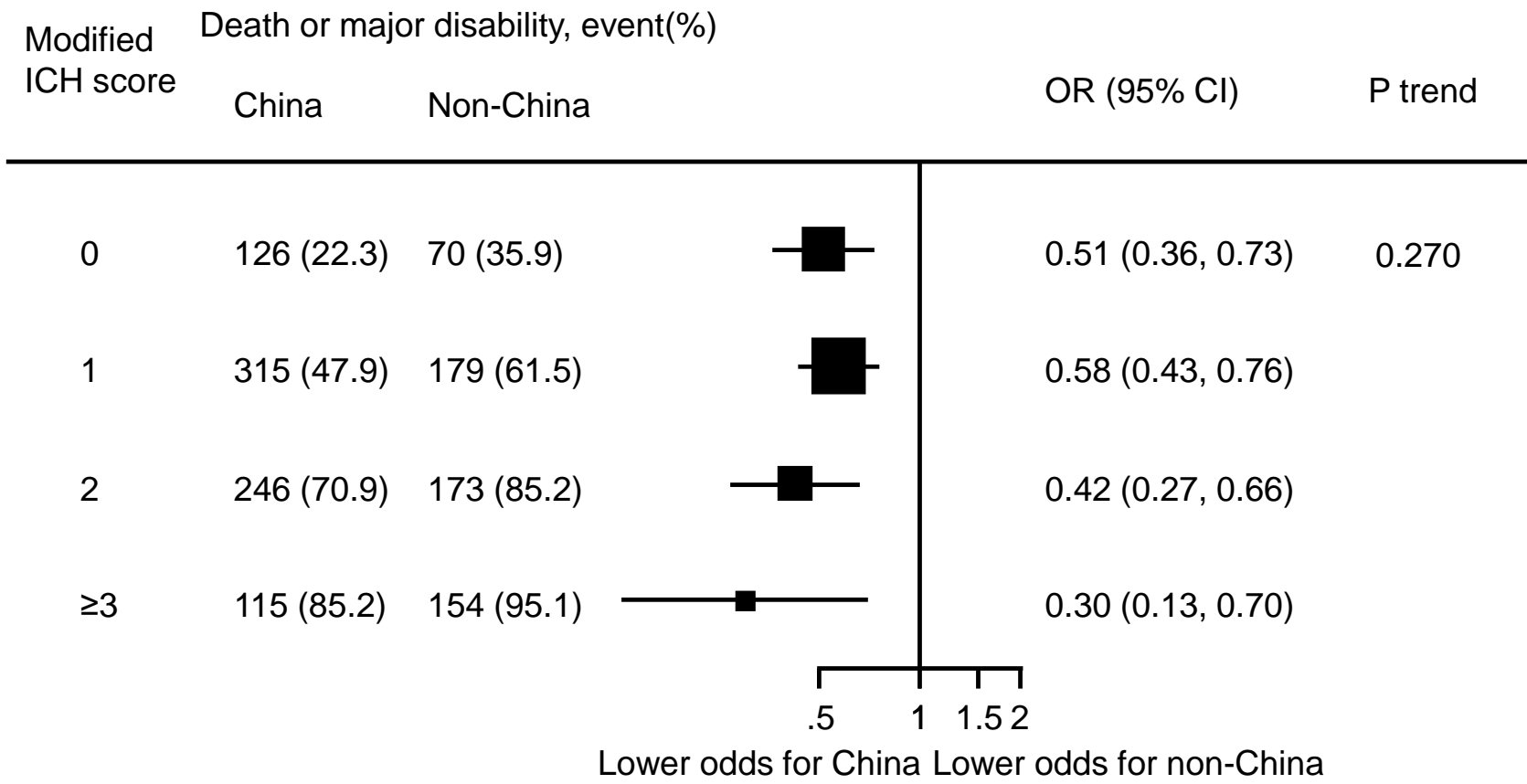
Management - Baseline to Day 7

Variable	Non-China (N=909)	China (N=1430)	P value
Time of ICH to BP lowering treatment	3.9(2.8-5.3)	4.1(3.0-5.5)	0.01
Any BP lowering treatment	82%	59%	<0.01
Intubation	13%	4%	<0.01
DVT prophylaxis	67%	1%	<0.01
Haemostatic agents	8%	1%	<0.01
Decision to withdraw active treatment	7%	3%	<0.01
Intravenous mannitol	14%	85%	<0.01
ICU admission	34%	40%	<0.01

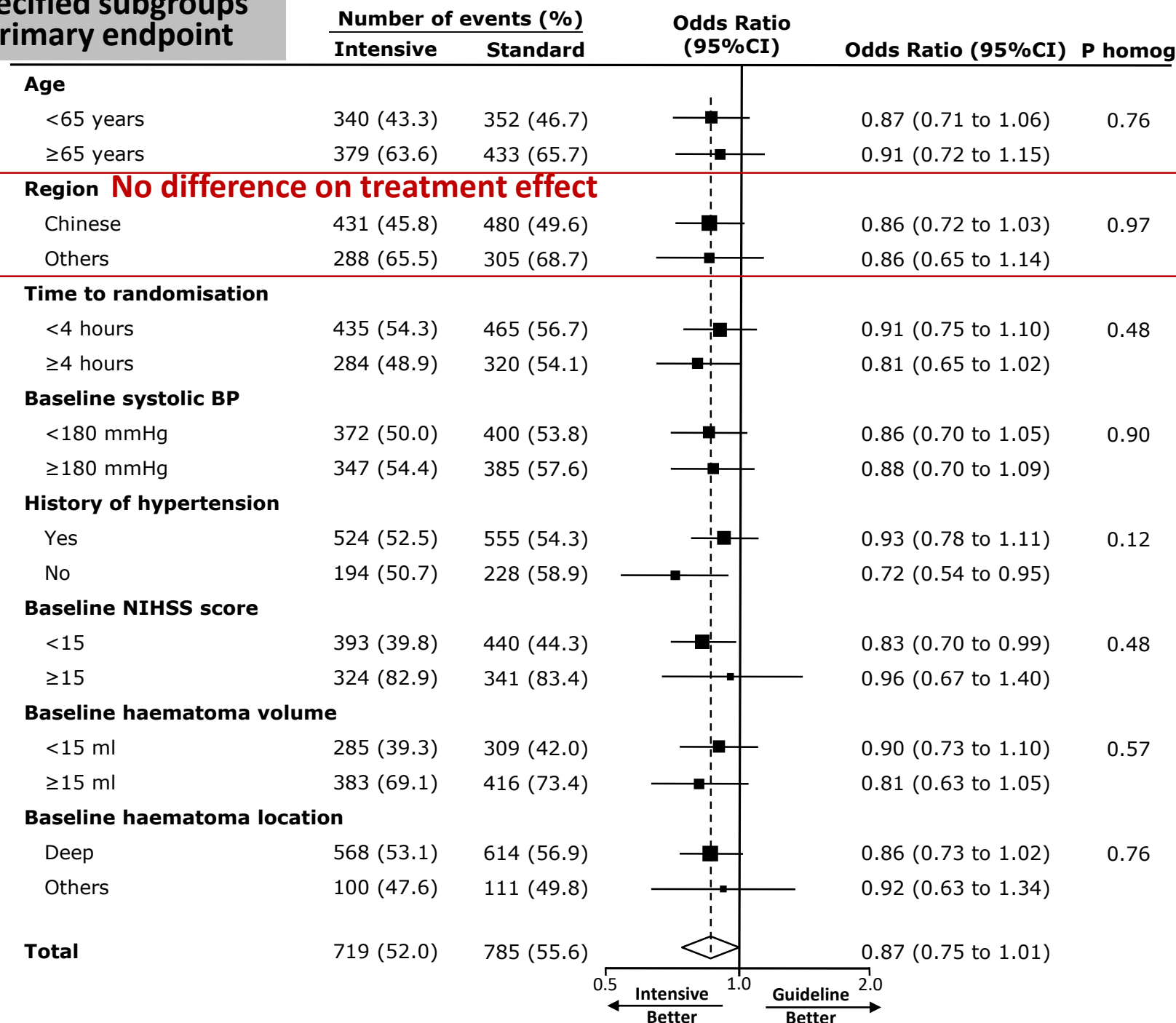
Achieved systolic BP levels, by region



Modified ICH score stratified analysis for primary outcome



Pre-specified subgroups and primary endpoint



0.5 1.0 2.0
 ← Intensive Better Guideline Better →

Take home message

- Despite differences in clinical characteristics, management and outcomes between Chinese and non-Chinese ICH patients, there was a similar treatment effect of early intensive BP lowering
- Suggesting factors, apart from BP reduction contributing to a better outcome in Chinese patients

**Thank you for your
attention!**