

Predictors of pneumonia and its outcomes in intracerebral haemorrhage? INTERACT1&2 results

Xia Wang

The George Institute for Global Health
xwang@georgeinstitute.org.au

For the INTERACT2 Investigators in 144 hospitals in 21 countries

Background

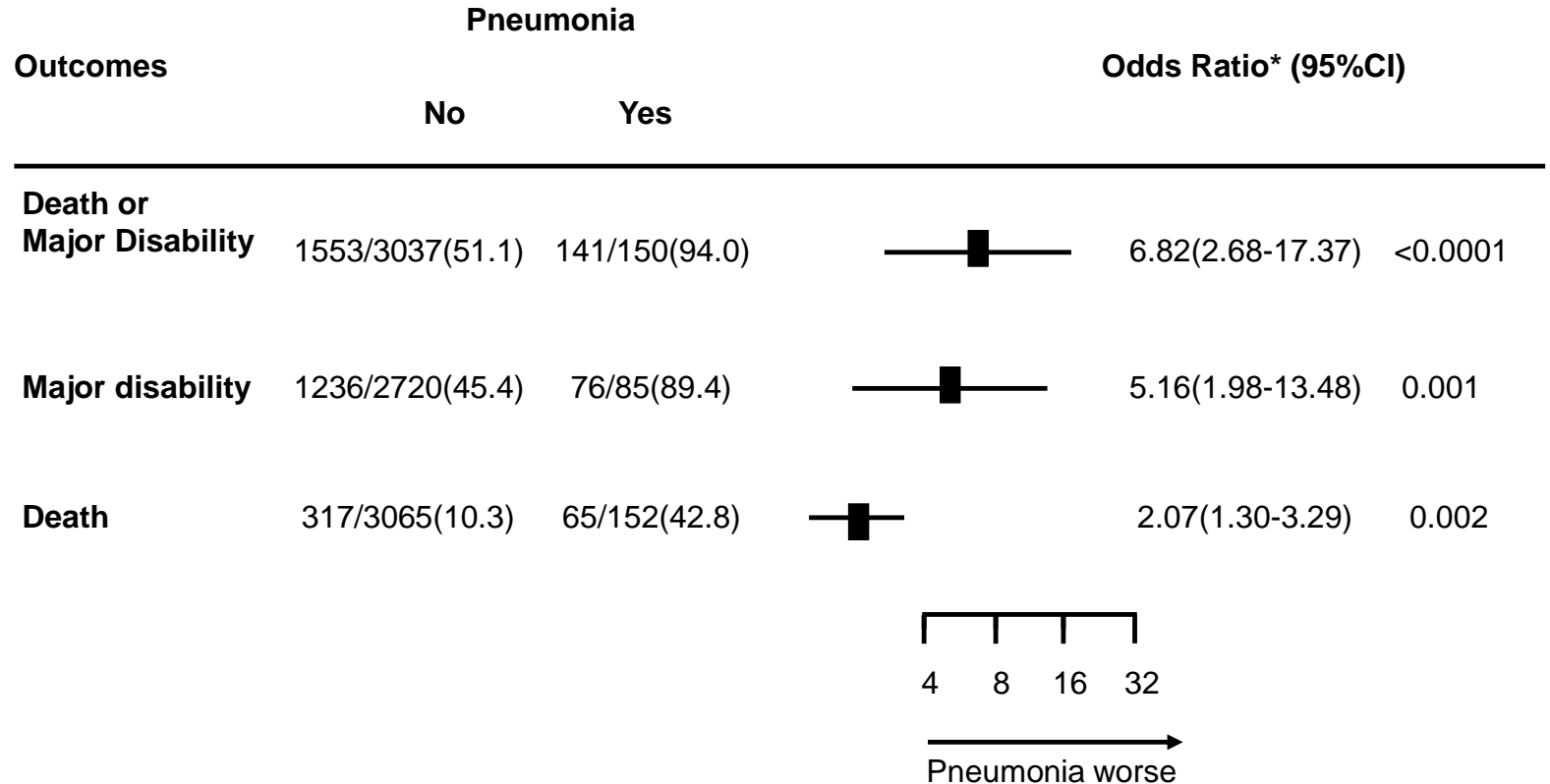
Diagnostic Approach	Number of Studies	Pooled Proportion, %	95% CI	<i>I</i> ² , %
Objective standard criteria	20	19.1	15.1–23.4	98.5
Objective ad hoc criteria	26	13.9	11.9–15.9	97.9
Unspecified clinician-reported diagnosis or initiation of antibiotics	12	11.1	9.6–12.6	99.3
No reported definition	6	11.1	2.6–24.4	96.1

CI indicates confidence interval.

Independent predictors

	Pneumonia		AOR (95%CI)	P value
	No (n=3097)	Yes (n=154)		
Age, mean (SD), years	63.0(12.8)	71.9(10.6)	1.92(1.62-2.28)	<0.0001
Female (%)	1141(37)	50(33)	0.58(0.38-0.89)	0.01
NIHSS score ≥ 15 (%)	730(27)	79(62)	2.61(1.72-3.98)	<0.0001
Hematoma volume at baseline, median (IQR), mL	10.5(5.5-18.5)	19.5(9.7-35.7)	1.02(1.01-1.03)	0.0003
Any intravenous BP lowering treatment	1375(52)	95(74)	1.70(1.11-2.62)	0.02
Intubation	181(6)	39(25)	3.12(1.11-2.62)	<0.0001

Clinical outcomes



*adjusted for age, sex, China, NIHSS≥15, baseline hematoma volume, any intravenous BP-lowering treatment, intubation

**Thank you for your
attention!**